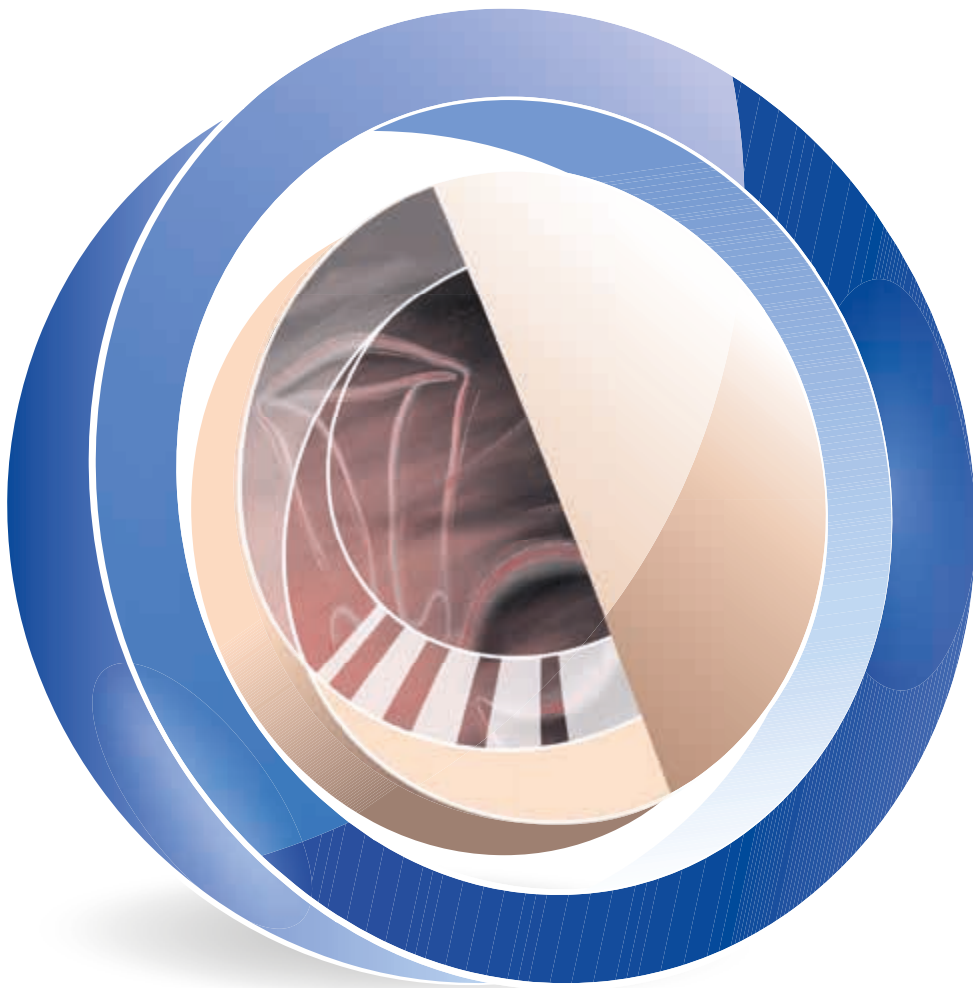


Highlights 2019

Gynecology





Creating Certainty: Diagnostics and Treatment Outside the OR

Solutions for office hysteroscopy





Hysteroscopy allows accurate diagnosis of any abnormalities in the uterine cavity while 5 Fr. instruments often make immediate treatment possible. Narrow-lumen hysteroscopes enable procedures to be performed outside the OR without anesthesia or dilation of the cervix. Furthermore, hysteroscopy can be used to rule out any obstacles to implantation prior to IVF treatment.

- The CAMPO TROPHYSCOPE® with a diameter of only 2.9 mm allows an atraumatic primary approach to the uterine cavity under visualization
- The irrigation function of the ENDOMAT® SELECT provides an optimal overview thanks to the constant maintenance of intracavitary pressure
- Outsourcing diagnostic services and minor hysteroscopic procedures extends the capacity of the OR to the clinical outpatient setting

Especially suitable for use in gynecological office settings and outpatient departments or IVF centers

- 26008 BAC CAMPO **TROPHYSCOPE®**, HOPKINS® telescope 30°, size 2.9 mm, length 24 cm, with irrigation connector, for use with Continuous-Flow Sheaths 26152 DA and 26152 DB
- 26152 DA **Continuous-Flow Examination Sheath**, size 3.7 mm, length 18 cm, with suction adaptor, for use with CAMPO TROPHYSCOPE® 26008 BAC
- 26152 DB **Continuous-Flow Operating Sheath**, size 4.4 mm, length 16 cm, with channel for semirigid instruments 5 Fr., with 1 stopcock and 1 LUER-Lock adaptor, for use with CAMPO TROPHYSCOPE® 26008 BAC
- 26152 DS **TROPHY Curette**, for use with Continuous-Flow Sheaths 26152 DA and 26152 DB

5 Fr. operating instruments for use with CAMPO TROPHYSCOPE®

	26159 UHW	Biopsy and Grasping Forceps , semirigid, double action jaws, 5 Fr., length 34 cm
	26159 SHW	Scissors , semirigid, pointed, single action jaws, 5 Fr., length 34 cm
	26159 BE	Bipolar Dissection Electrode , semirigid, 5 Fr., length 36 cm
	26159 GC	GORDTS/CAMPO Bipolar Ball Electrode , semirigid, 5 Fr., length 36 cm

- 26176 LE **Bipolar High Frequency Cord**, length 300 cm
- UP 210 **ENDOMAT® SELECT**, suction and irrigation pump, incl. mains cord, power supply 100-240 VAC, 50/60 Hz
- UP 602 **HYSTEROSCOPY Software**
- 031523-10* **Tubing Set**, irrigation, pressure-controlled, sterile, for single use, package of 10



NEW

Especially suitable for the OR

- 26120 BAC CAMPO **TROPHYSCOPE®**, HOPKINS® telescope 30°, size 3.7 mm, length 22 cm, with irrigation connector, for use with Continuous-Flow Operating Sheaths 26153 DB and 26153 DC
- 26153 DB **Continuous-Flow Operating Sheath**, size 5.8 mm, length 16 cm, with channel for semirigid 5 Fr. instruments, with 1 stopcock and 1 LUER-Lock adaptor, for use with CAMPO TROPHYSCOPE® 26120 BAC
- 26153 DC **Continuous-Flow Operating Sheath**, size 6.2 mm, length 16 cm, with channel for semirigid 5 Fr. instruments, with 1 stopcock and 1 LUER-Lock adaptor, for use with CAMPO TROPHYSCOPE® 26120 BAC



Information on further 5 and 7 Fr. operating instruments is available in the Gynecology catalog.



Resection to Perfection

The new bipolar 15 Fr. office resectoscope

In addition to bipolar resectoscopes with diameters of 22 and 26 Fr., KARL STORZ now offers a 15 Fr. resectoscope. Due to its small diameter, this resectoscope offers the possibility to perform resection outside the OR. Infertility patients or those suffering from abnormal bleeding can thus be treated in the doctor's office or clinical outpatient setting, even without anesthesia. Together with the AUTOCON® III 400 HF generator, effective resection, coagulation or vaporization is achieved.

- Minimal outer diameter
 - Possible to perform resection in the doctor's office or clinical outpatient setting, even without anesthesia
 - Little or even no dilation required
- Can be used as a diagnostic hysteroscope in conjunction with semirigid 5 Fr. instruments (optional)
- Real bipolar system with current not returned via the sheath
- Self-cleaning loops due to plasma formation

15 Fr. Bipolar Resectoscope

- 26120 AA **HOPKINS® Straight Forward Telescope 0°**, diameter 2.9 mm, length 30 cm, **autoclavable**
- 26053 SCK **Resectoscope Sheath**, 15 Fr., oblique beak, rotating inner sheath,
color code: green
- 26053 OC **Standard Obturator**
- 26053 EBH **Working Element Set**, bipolar



- 26053 CD **Telescope Bridge**, with channel for semirigid 5 Fr. operating instruments,
for use with Resectoscope Sheath 26053 SC



	011050-10*	Cutting Loop , bipolar, 15 Fr., sterile, for single use, package of 10	STERILE
	011051-10*	Cutting Electrode , bipolar, pointed, 15 Fr., sterile, for single use, package of 10	STERILE
	011052-10*	Coagulation Electrode , bipolar, ball end, 15 Fr., sterile, for single use, package of 10	STERILE
	011053-10*	Cutting Loop , bipolar, longitudinal, 15 Fr., sterile, for single use, package of 10	STERILE
	26053 R	MAZZON Cold Loop , straight, 15 Fr.	
	26053 T	MAZZON Cold Loop , rake-shaped, 15 Fr.	
	26053 U	MAZZON Cold Loop , knife-shaped, 15 Fr.	

- UH 400 **AUTOCON® III 400 High-End**, power supply 220-240 VAC, 50/60 Hz,
including mains cord



Further information on our bipolar and unipolar resectoscopes in 15 Fr., 22 Fr. and 26 Fr. is available in the Gynecology catalog.



Rapid Tissue Ablation with a Small Diameter

NEW 19 Fr. Intrauterine BIGATTI Shaver (IBS®) with HYSTEROMAT E.A.S.I.®

With an optical system that features an outer diameter of only 6 mm, the Intrauterine BIGATTI Shaver (IBS®) is inserted into the minimally dilated cervix. Thanks to the 4 mm shaver blade, the immediate removal of intrauterine pathologies is now possible outside the OR, e.g., in office settings and clinical outpatient departments or IVF centers.

- Mechanical removal of intrauterine pathologies such as polyps, myomas or placental remnants
- Immediate suction of the resected tissue via the HYSTEROMAT E.A.S.I.® provides optimal visibility
- HYSTEROMAT E.A.S.I.® can be used in both hysteroscopy and laparoscopy
- No thermal damage to tissue as HF current is not used
- Fully reusable system
- **NEW:** More intraoperative possibilities thanks to various 4 mm instruments

Intrauterine BIGATTI Shaver (IBS®)
for use in office settings, clinical outpatient departments, operating rooms or
IVF centers

26208 AMK **HOPKINS® Wide Angle Straight Forward Telescope 6°, Set**, with parallel eyepiece, length 20 cm, 19 Fr., **autoclavable**, fiber optic light transmission incorporated with working channel, with LUER-Lock connection for inflow, color code: green-blue including:
Obturator, for use with HOPKINS® Telescope 26208 AMA
LUER-Lock Tube Connector

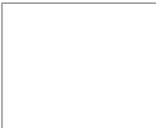






26 7020 50 **DRILLCUT-X® II Shaver Handpiece GYN**, for use with UNIDRIVE® S III SCB

26208 SA **Shaver Blade GYN**, straight, sterilizable, concave cutting edge, double serrated, oval cutting window, diameter 4 mm, length 32 cm, for use with DRILLCUT-X® II Handpiece **26 7020 50**, color code: blue-green

26208 SB **Shaver Blade GYN**, straight, sterilizable, double serrated cutting edge, rectangular cutting window, diameter 4 mm, length 32 cm, for use with DRILLCUT-X® II Handpiece **26 7020 50**, color code: blue-yellow

26208 SZ **Coagulation Electrode**, bipolar, for use with Intrauterine BIGATTI Shaver (IBS®)

26176 LE **Bipolar High Frequency Cord**, length 300 cm

				
	26410 MDM	26410 MDN	26410 MDO	CLICKLINE Dissecting and Grasping Forceps
	26410 MVM	26410 MVN	26410 MVO	CLICKLINE Dissecting and Grasping Forceps
	26410 MWM			CLICKLINE Scissors

26 701001-1 **UNIDRIVE® S III, GYN Set**, motor system, power supply 100-120/230-240 VAC, 50/60 Hz

20 7010 70 **Control Cable**

26 340001-1 **HYSTEROMAT E.A.S.I.® SCB**

031717-10* **Tubing Set**, irrigation

STERILE 

031217-10* **Tubing Set**, suction

STERILE 

Alternative:

UP 210 **ENDOMAT® SELECT**, suction for irrigation pump

UP 603 **IBS® Shaver Software**

030647-10* **Tubing Set**, suction

STERILE 

UP 602 **HYSTEROSCOPY Software**

031523-10* **Tubing Set**, irrigation

STERILE 





VITOM® – Visualization System for Gynecology

The VITOM® system provides excellent depth of field, optimal magnification, good contrast and excellent color reproduction, which are the ideal prerequisites for the best possible visualization of colposcopic findings, conizations as well as vaginal and open surgical interventions.

Furthermore, the VITOM® system magnifies the surgical site and provides an excellent view of the epithelial border, e.g., during loop excision.

- Enhanced magnified images with integrated green filter during colposcopy or conization
- Ideal for training, documentation or streaming of interventions
- Ergonomic work
- Enhanced illumination in the field of view thanks to the integrated illuminator
- Compatible with various endoscopic camera systems (e.g., IMAGE1 S™)

Image source and further information on loop conization: "Primary, secondary and tertiary prevention of cervical cancer" - 2nd Edition, Prof. Dr. med. A. SCHNEIDER, M.P.H.

<https://go.karlstorz.com/HL-Vitom-en>


Overview

Holding Arm with Clamping Cylinder and Clamping Jaw for VITOM®



28272 GM
28272 GS
28272 CN
28272 UGN

VITOM® Telescope 90° with Integrated Illuminator




26013 VDA

IMAGE1 S™ Camera System



TH 100
TC 200
TC 300

Fiber Optic Light Cable



495 TIP

FULL HD Monitor




TM 220

Cold Light Fountain POWER LED 300 SCB



TL 300

Optional Accessories



26520043
26520045
26165 UG
26165 UM
26165 UK
26165 RK



Visualization of the Lymphatic System in Gynecology with OPAL1® NIR/ICG Technology

In gynecology, the degree of tumor involvement in the sentinel lymph node (SLN) is of great importance as it provides medical information about the tumor stage.

OPAL1® NIR/ICG technology and the marker indocyanine green (ICG) enables non-radioactive visualization of the entire lymph system surrounding a tumor in real time.

- Non-radioactive lymph node detection method in the case of vulvar, endometrial, cervical or mammary carcinoma
- Multidisciplinary, can be used for laparoscopic and open surgical procedures
- OPAL1® technology for NIR/ICG based on the IMAGE1 S™ camera platform
- Xenon-based technology (no laser safety measures necessary)
- Intuitive switchover between standard white light and fluorescence mode via footswitch
- Blue or green coloring for high-intensity fluorescence with a clear demarcation to the surrounding tissue

OPAL1® Technology for NIR/ICG,
based on the IMAGE1 S™ camera platform

Camera system and
camera head



IMAGE1 S CONNECT®
TC 200



IMAGE1 S™ H3-LINK
TC 300



IMAGE1 S™ H3-Z FI
TH 102

Light source and
light cable



D-LIGHT P
20 1337 01-1



Fiber Optic Light Cables
495 NAC /NCSC /TIP /NCS /VIT

Endoscopes



HOPKINS® Telescopes
26003 ACA /BCA /AGA /BGA
8710 AGA /26046 ACA /BCA
8711 AGA

VITOM®



VITOM® II ICG
20 9160 25 AGA
28272 CN /UGK /HC
28172 HM /HR

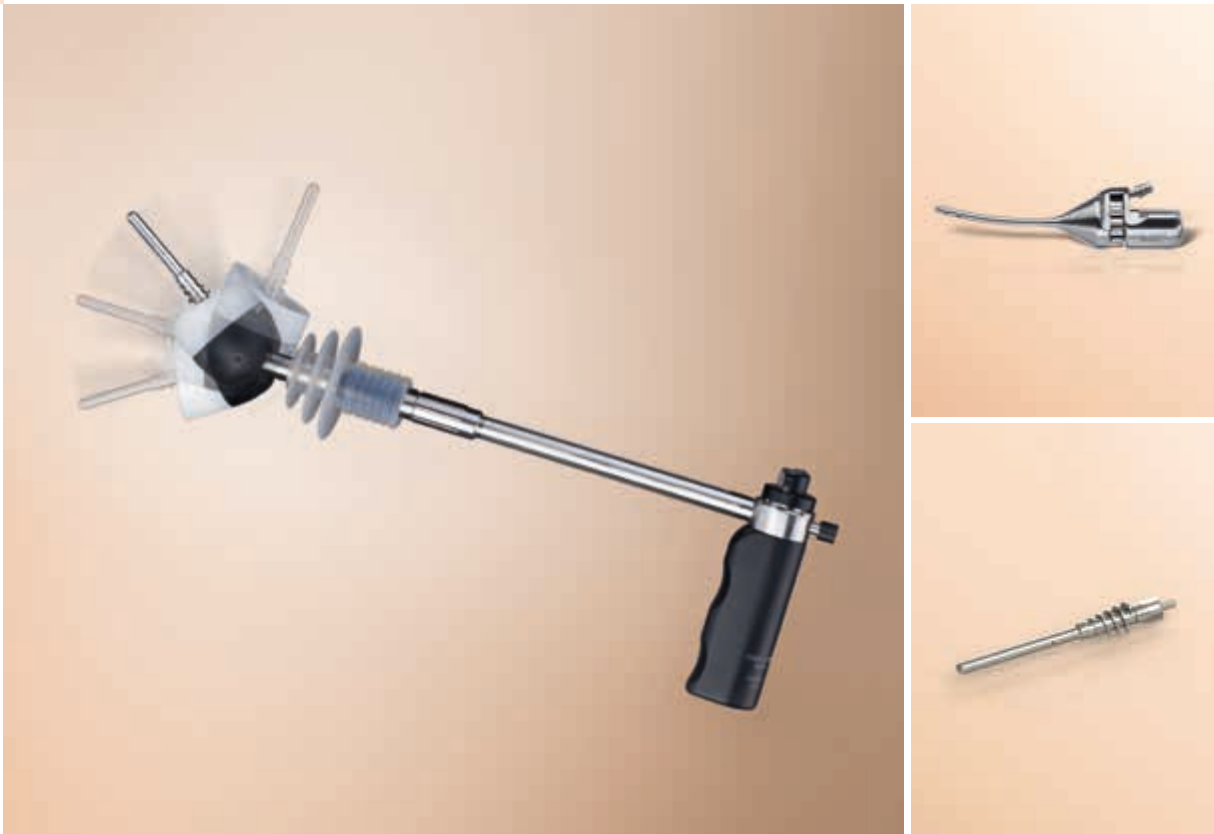


Source: Richard Wojdat, M.D., Mathilden Hospital, Herford, Germany (endoscopic image)

Laparoscopic SLN mapping of endometrial carcinoma yielded the following results
(radioactive tracer ^{99m}Tc vs. ICG):

	Radioactive Tracer ^{99m} Tc		ICG	
	Total SLN detection rate	Bilateral SLN	Total SLN detection rate	Bilateral SLN
Study 1 ¹	83%	61%	95.5%	95.5%

¹ Imboden et al., Surg. Oncol. 2015



KECKSTEIN Uterine Manipulator

Extremely versatile

The versatile KECKSTEIN uterine manipulator makes gynecological surgery in the lower pelvis easier and safer. Presentation of the operative field during hysterectomy as well as organ-preserving surgery, e.g. in the case of endometriosis, is greatly enhanced in comparison to conventional manipulators thanks to the possibility of anteflexion and retroflexion of the distal tip and cap. Various configurable atraumatic inserts for interventions in reproductive medicine or organ-preserving surgery offer the operating surgeon completely new surgical possibilities.

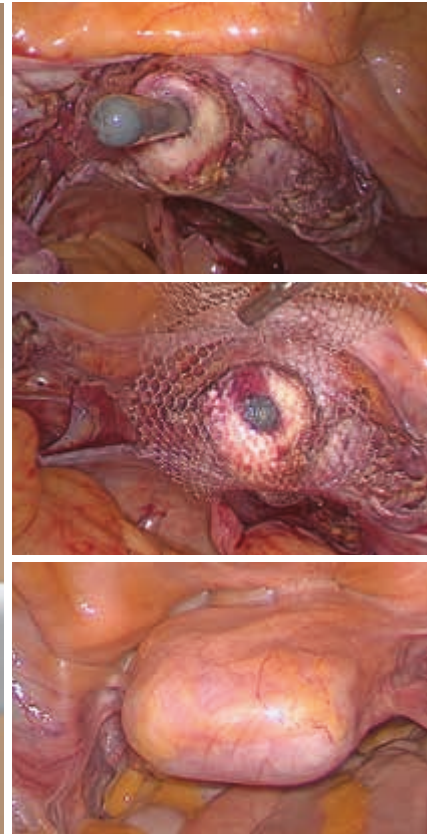
- Reusable seal for Total Laparoscopic Hysterectomy
- Anteflexion and retroflexion of the distal tip and the cap
- Atraumatic inserts for organ-preserving interventions

Information on further optional accessories is available in the Laparoscopy catalog.

- 26168 Z **KECKSTEIN Uterine Manipulator**, complete
including:
Handle
Manipulator Sheath
Cap, diameter 37 mm, length 30 mm
Cap, diameter 42 mm, length 30 mm
Spiral Insert, diameter 15 mm
Spiral Insert, diameter 20 mm
Working Insert, diameter 6 mm, length 60 mm
Working Insert, diameter 6 mm, length 40 mm
Seal
Working Insert, for chromopertubation, diameter 3 mm, length 30 mm
Working Insert, atraumatic, diameter 5 mm, length 60 mm
Tenaculum Forceps
Holder for Tenaculum Forceps
Pertubation Tube
2x **LUER-Lock Connector**
Y-Tube Connector

Optional accessories

- 26168 ZU **Cap**, diameter 28 mm, length 30 mm
26168 ZV **Cap**, diameter 32 mm, length 30 mm
26168 ZE **Cap**, diameter 47 mm, length 30 mm
26168 ZF **Spiral Insert**, diameter 12 mm
26168 ZK **Working Insert**, diameter 6 mm, length 80 mm
26168 ZS **Working Insert**, diameter 6 mm, length 30 mm
26168 ZN **Working Insert**, for chromopertubation, diameter 3 mm, length 50 mm
26168 ZO **Working Insert**, atraumatic, diameter 5 mm, length 40 mm
26168 ZR **Working Insert**, atraumatic, diameter 5 mm, length 90 mm

**NEW**

SCHÄR Manipulator

The instrument for laparoscopic descensus surgery

For laparoscopic sacrocolpopexy, which has increasingly become the standard procedure for treating various forms of prolapses characterized by a descensus of the vaginal vault or uterus, KARL STORZ now offers a multifunctional instrument – the SCHÄR manipulator.

Thanks to the variable adjustable working insert, it provides optimal support for performing the following procedures:

- Supracervical hysterectomy
- Sacrocervicopexy surgery following supracervical hysterectomy
- Sacrocolpopexy of the vaginal stump following hysterectomy
- Sacrohysteropexy (sacrocolpopexy with uterine preservation)

The flat shape of the manipulator allows optimal visualization and dissection of the front and back walls of the vagina in order to fixate the mesh with a suture.

26168 SC SCHÄR **Manipulator**
including:
Handle, incl. cleaning adaptor
Working Element
Working Insert



Handle



Working Element



Working Insert



Cleaning Adaptor



The Bipolar SupraLoop

For laparoscopic supracervical hysterectomy

In addition to the well-known SUPRALOOP unipolar loop, KARL STORZ now offers a bipolar SUPRALOOP for the removal of the uterus in supracervical hysterectomy.

- No neutral electrode necessary for the bipolar SUPRALOOP
- Loop available in two sizes
- Shorter operating time thanks to quick removal of the uterus
- Cost savings thanks to reusable handle and outer sheath

26183 N **SUPRALOOP Set**, bipolar, size 5 mm, length 30 cm
including:

SUPRALOOP Handle

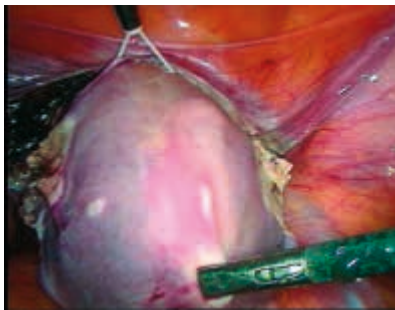
SUPRALOOP Outer Sheath

SUPRALOOP Spare Loop

Accessories:

26183 NC **SUPRALOOP Spare Loop**, bipolar, size 120 x 85 mm, unsterile, for single use

26183 ND **SUPRALOOP Spare Loop**, bipolar, size 200 x 150 mm, unsterile, for single use



The SUPRALOOP is inserted into the abdominal cavity via a 6 mm trocar. The loop is then placed around the uterus and, after carefully checking the correct positioning, the loop is retracted...



...and the uterus is removed using bipolar current.



TCHARTCHIAN JET GRASPER® with Integrated Irrigation Function

The flat jaw design enables fine dissection, even under tight or cramped anatomical conditions. With the jaws in the closed position, hydrodilatation can be achieved via a distal port in the jaws in order to provide better visualization of certain structures. The irrigation medium then seeks the path of least resistance and thus optimally supports anatomically correct tissue dissection. A bed of water is thus created that helps maintain a safe distance to delicate structures (e.g., ureter).

- Supports the adhesiolysis of adhered tissue layers
- Creates more space between tissue layers (hydrodilatation)
- Supports safe exposure of the ureter (ureterolysis)

33331 ST **CLICKLINE TCHARTCHIAN Dissecting and Grasping Forceps “JET GRASPER®”,** rotating, dismantling, without connector pin for unipolar coagulation, with integrated irrigation function, with LUER-Lock irrigation connector for cleaning, single action jaws, size 5 mm, length 36 cm including:
Metal Handle, without ratchet
Rotating Wheel, for 33131 T
Outer Sheath with Working Insert
Cleaning Brush



ALKATOUT Retractor

For the atraumatic retraction of sensitive structures

The ALKATOUT retractor is suitable for all laparoscopic interventions (LAP, GYN, URO). It is designed for the atraumatic retraction of sensitive structures and helps expose the surgical site, e.g., in abdominal surgery, without causing injury to nerves and blood vessels. The ALKATOUT retractor is available in sizes 5 and 10 mm.

30623 AR ALKATOUT **Retractor**, size 10 mm, length 43 cm

30623 ARS ALKATOUT **Retractor**, size 5 mm, length 43 cm

Imaging and OR Integration



Storage and
administration of image
and video data



SCENARA® .store

Flexible support for
image sources

3D

IMAGE
HD 1

4K

Centralized communication
interface



SCENARA® .connect

KARL STORZ OR1™

Future-oriented integration meets innovative
data management

STORZ
KARL STORZ — ENDOSKOPE
THE DIAMOND STANDARD

KARL STORZ SE & Co. KG, Dr.-Karl-Storz-Straße 34, 78532 Tuttlingen/Germany
www.karlstorz.com

Further information and an overview
of Gynecology products from KARL STORZ
can be viewed on



www.karlstorz.com
in the Human Medicine section,
Gynecology

It is recommended to check the suitability of the product for the intended procedure prior to use.

